

Envelope Clutch (iPad / Tablet Case)

PATTERN DIRECTIONS:

- Print all pages of PDF at full size (don't scale)
- Measure the 1" square to make sure the pattern printed at the correct size
- Match up the diamonds & tape the pages together
- Cut out the pattern pieces on the solid lines

PATTERN PIECES:

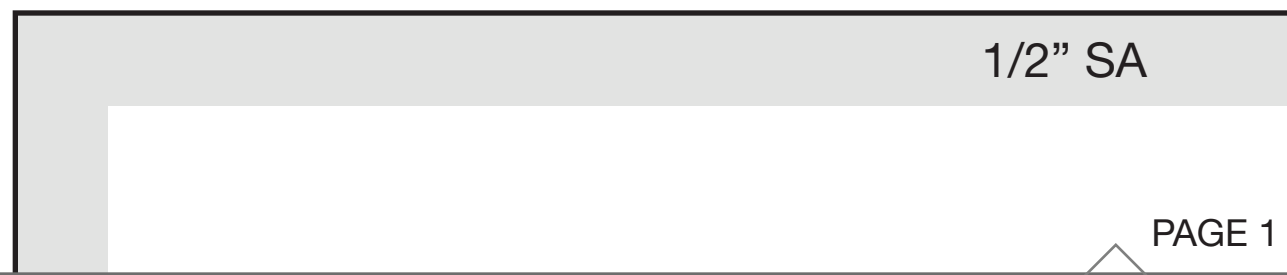
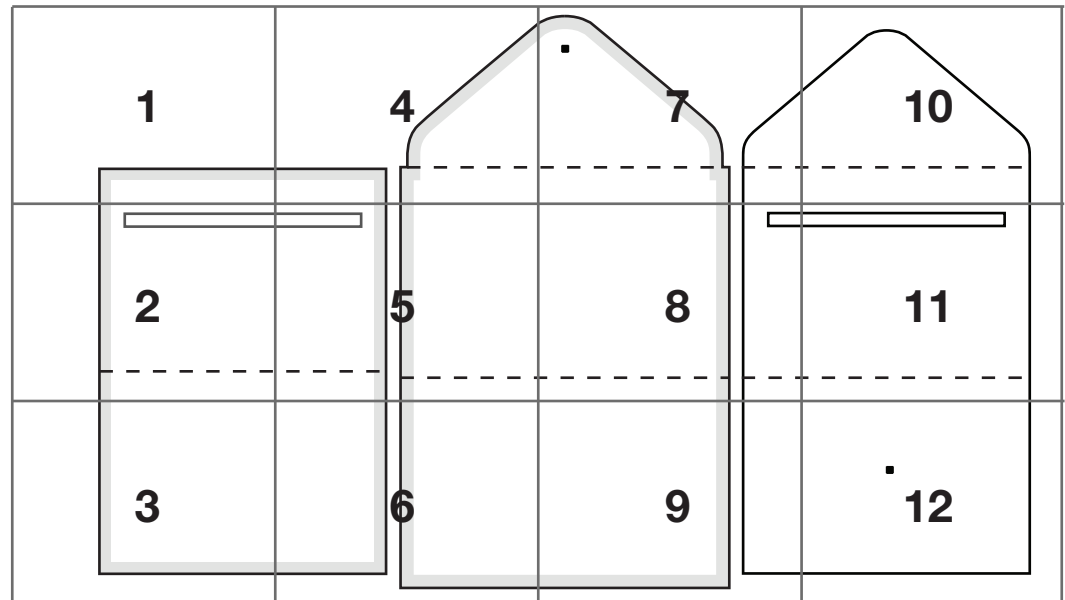
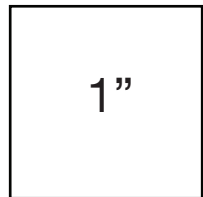
Zipper Compartment (on pages 1, 2, 3, 4, 5, 6)

Outside/Inside (on pages 4, 5, 6, 7, 8, 9)

Interfacing (on pages 7, 8, 9, 10, 11, 12)

——— Cut on line

■ Seam Allowance (SA)



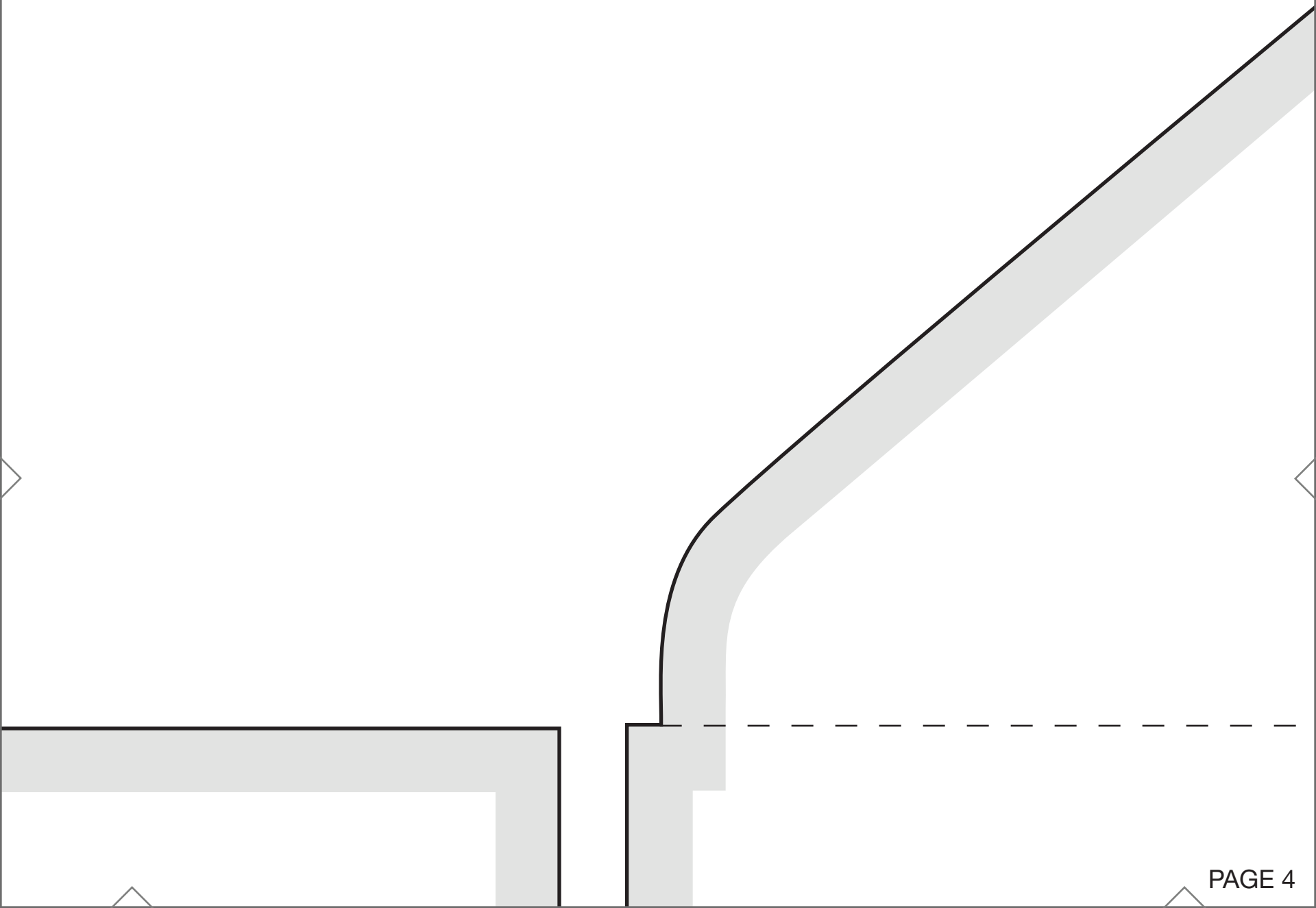
zipper

Clutch / Tablet C

ZIPPER COMPARTM

Cut 1 of outer or lining

1/2" SA



Case

ENT

fabric

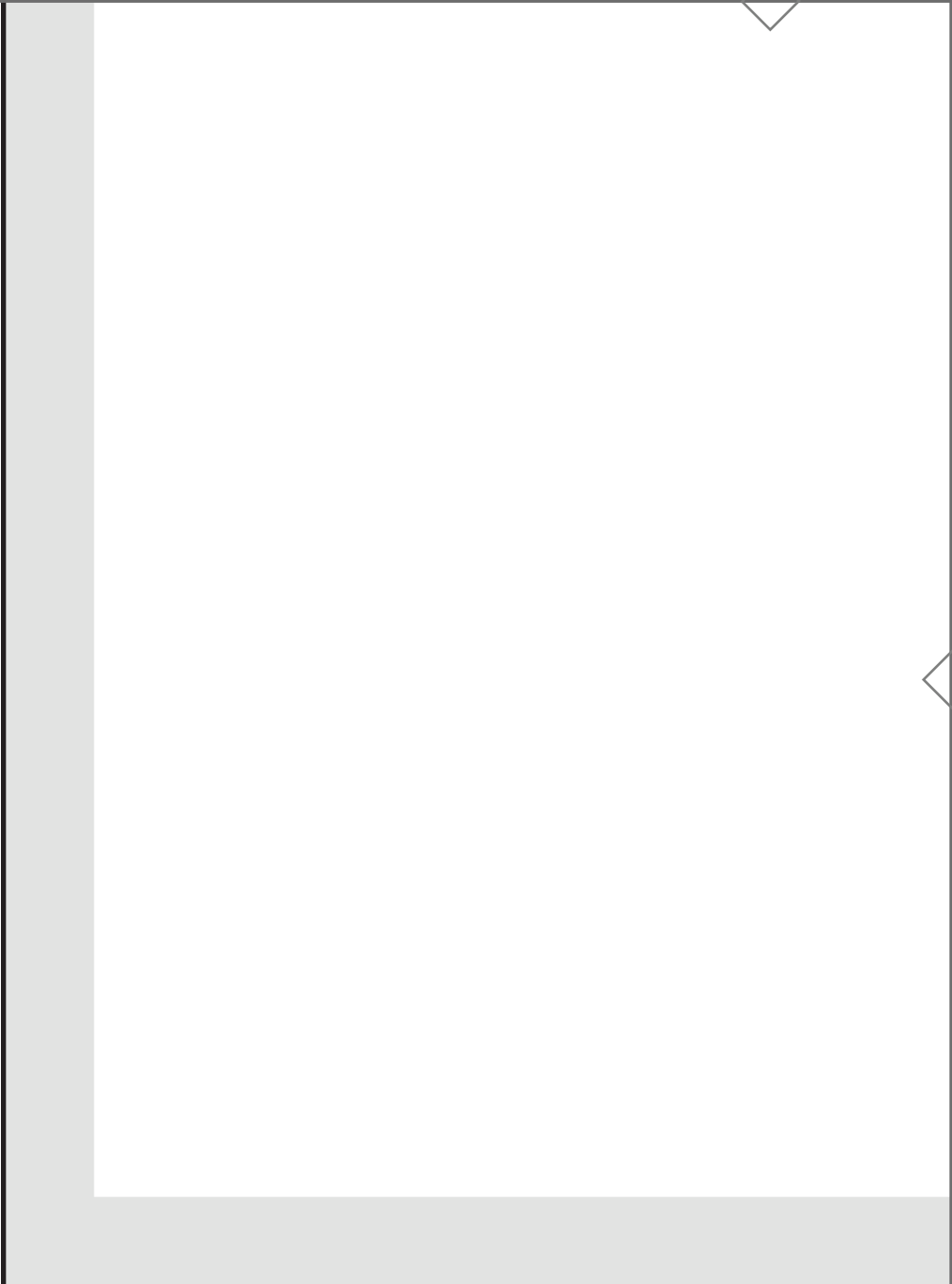
Clutch

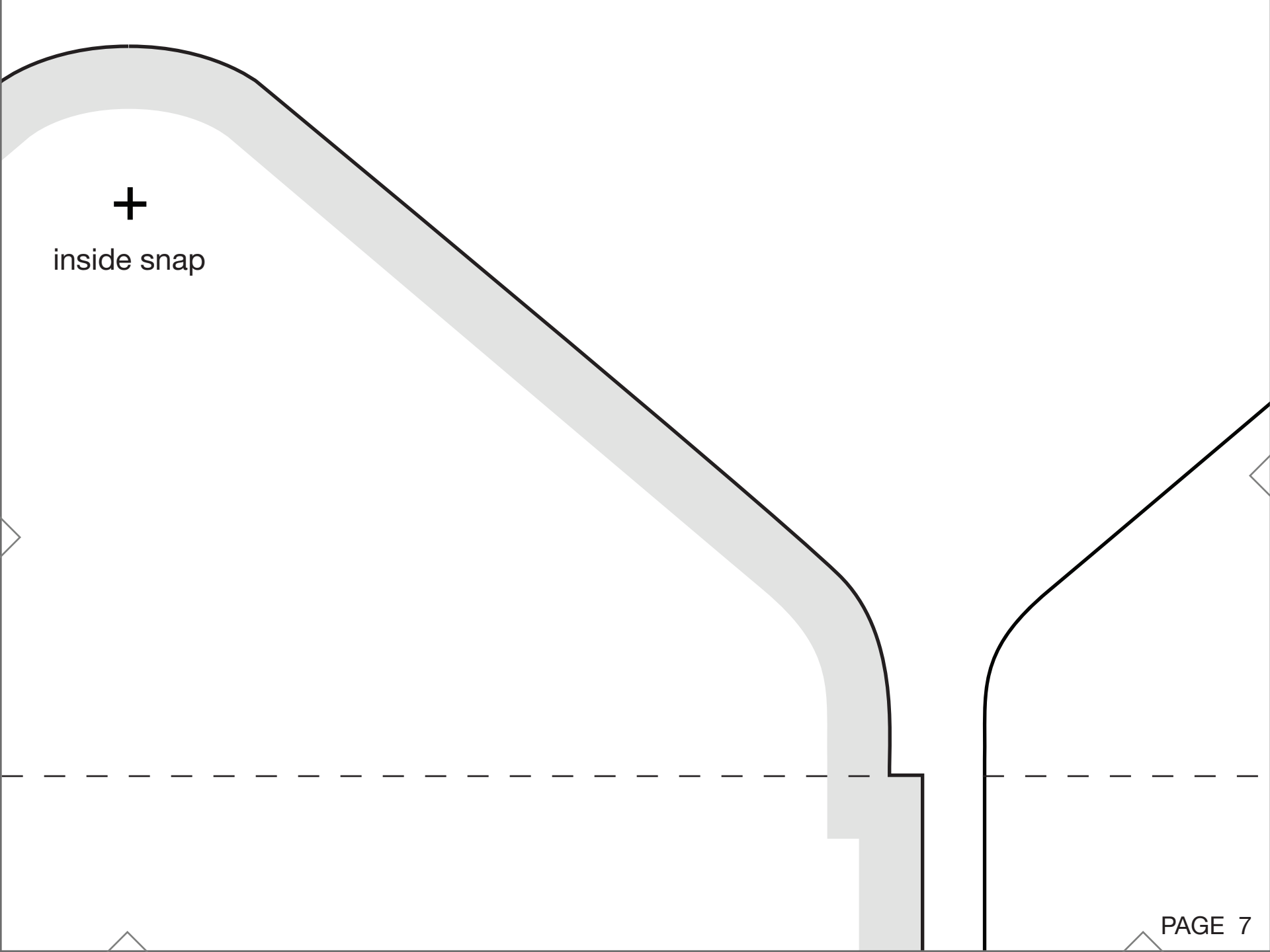
OUTS

Cut

Cut

1/2" SA





+

inside snap

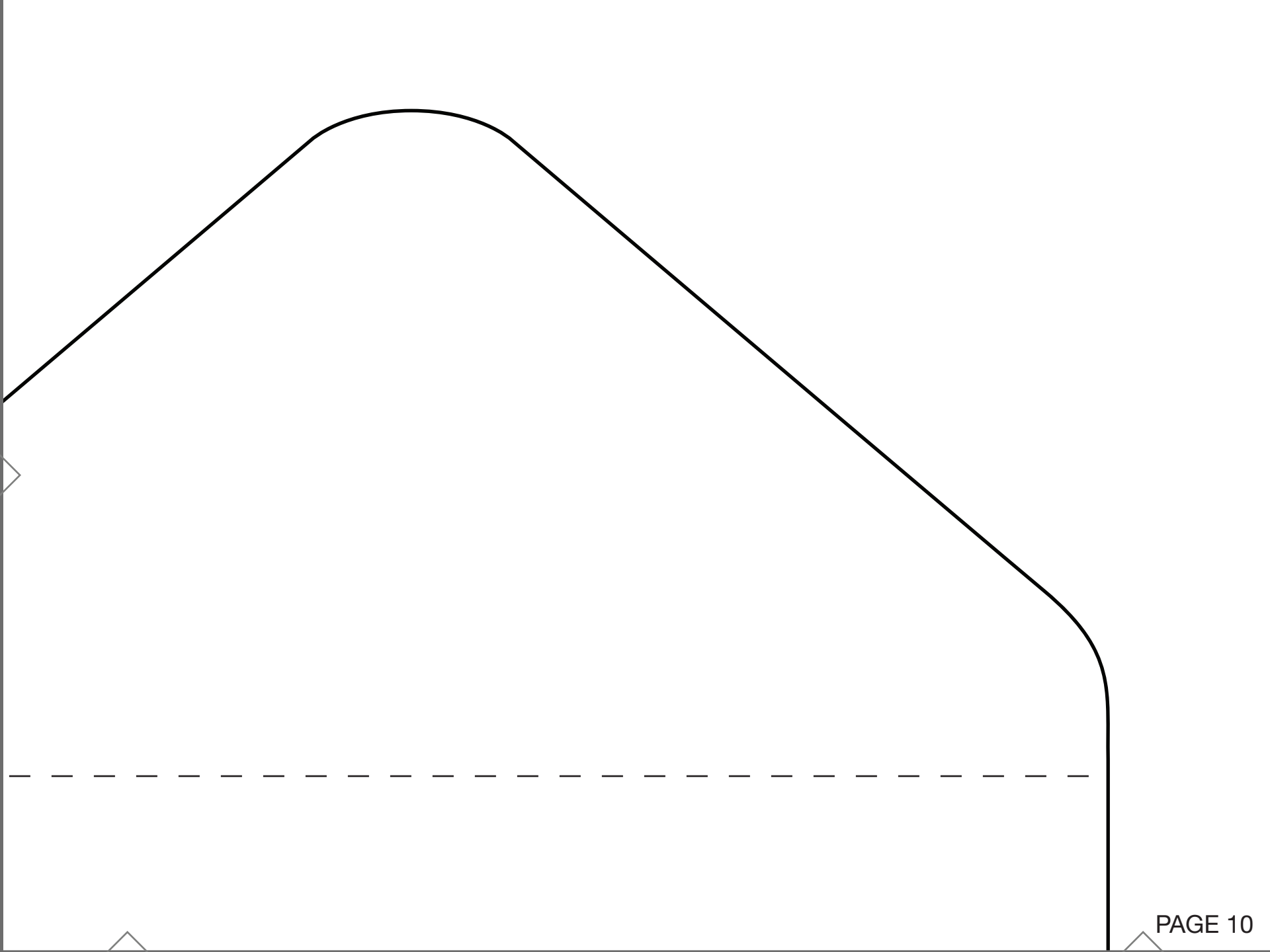
n / Tablet Case

IDE / INSIDE

- 1 of outer fabric
- 1 of lining fabric



1/2" SA

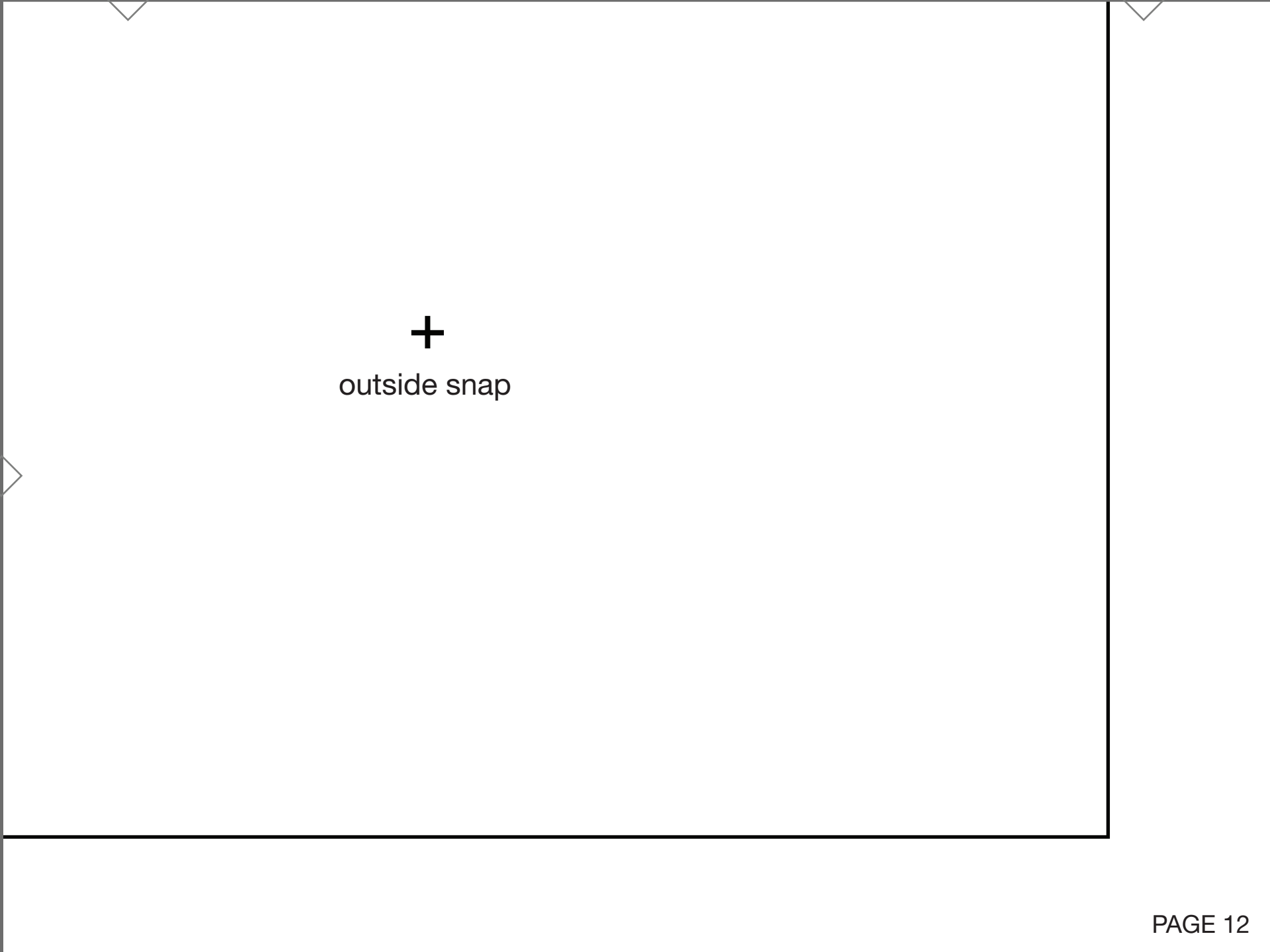


zipper

Clutch / Tablet Case

INTERFACING

Cut 1 of interfacing



+
outside snap